



DIGITUS[®] Plug&View IP cameras

Quick Installation Guide (QIG)

What's in the box

1 X Plug&View IP camera
1 X power supply with cable
1 X Ethernet cable
1 X Quick Installation Guide
1 X CD with utilities
1 X removable antenna

Optional:
1 X Ceiling/Wall Mount
1 X Mounting Kit

Thank you for choosing a Plug&view IP-camera, which can be up-and-running quick and easy without complicated network settings.

1 Preparation

Before you can use your IP camera, some preparations must be taken care of.

Connect antenna

Plug the wireless antenna into the connector and tighten the mounting bolts.

Connect power supply

Plug the cable of the enclosed power supply into the "Power" connection of the camera.

Connect camera to router (e.g. AVM Fritz!Box, Telekom Speedport etc.)

Connect one end of the supplied network cable to the LAN port of the camera. Connect the other end of the network cable to one of the connectors marked as 'LAN' on the back of your router. Some routers have only one LAN connection, others have multiple connections. Your router must have a working Internet connection.

Insert SD-card

The Plug&View IP cameras support MicroSD cards with up to 32 GB storage capacity, which you can buy at your resellers. Pictures or videos taken with your IP camera are then stored on this card.

If your camera has an external port and does not have existing internal memory, insert your MicroSD card into the corresponding slot until it firmly snaps into place.

2 Setting up the Plug&View User Account

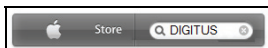
In order to use your Plug&View camera and to have a video image at any time and anywhere, you need to register your camera in a Plug&View user account. The setup and control can both be done from your Smartphone/tablet as well as from a PC.

2.1 Create a user account with your Smartphone/tablet

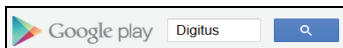
If you have an Apple® iOS device, you can find our "DIGITUS® Plug&View"-App in the Apple App Store™. For Smartphones and tablets running on Google Android OS you can find our "DIGITUS® Plug&View"-App in the Google™ Play Store.

Enter "Digitus" or "DIGITUS Plug&View" in the Search field of the respective App Store™.

Apple App Store™



Google™ Play





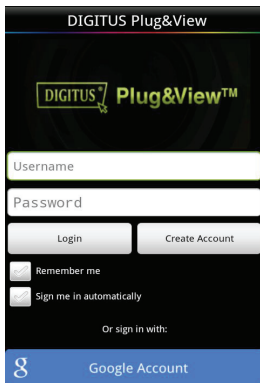
In the Search results the "DIGITUS® Plug&View"-App will be marked with this symbol.

Then install the app on your mobile device.

Start the app on your Tablet or on your smartphone.

You have 2 options to create your account:

1. If you already have a Google account, you can use your Google account to use your plug&View App, or
2. You directly create a new Plug&View account with an individual user name and password.



1. Signing in with a Google Account

Click on "Google account". Then you can use your Google Mail address and password to log in.

Or

2. Create new account with Plug&View

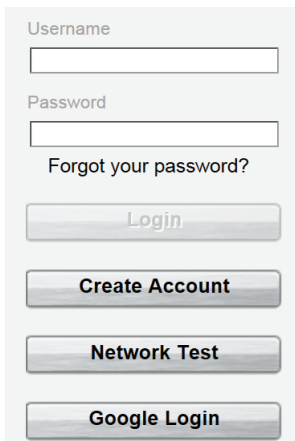
Click on "Create Account". On the next page, please choose a user name, a password, and confirm your e-mail address.

Then tap on "Apply" to your plug&View Account to create. Next you will receive an e-mail with instructions on how to unlock your account. Then log into the App with "Login" using your user name and password. Now you can add your camera to the account (proceed to item 3).

2.2 Create user account with your PC

Please visit the website <http://plug-view.com/>.

Then right click on "Login | My camera administration".



The image shows a light gray rectangular box containing a login and account creation form. At the top, the label "Username" is positioned above a white text input field. Below this, the label "Password" is positioned above another white text input field. Underneath the password field is the text "Forgot your password?". Below the text are four buttons stacked vertically: a "Login" button with a light gray gradient, a "Create Account" button with a dark gray gradient and white text, a "Network Test" button with a dark gray gradient and white text, and a "Google Login" button with a dark gray gradient and white text.

1. Sign in with Google Account

Click on "Google Login". Then you can use your Google Mail address and password to log in.

or

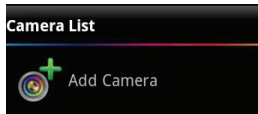
2. Create new account with Plug&View

Click on "Create Account". Please complete the information on the next page and confirm your entries with "Apply". Next you will receive an e-mail with instructions on how to unlock your account. On the login page you can then log in with your user data and add your camera.

3 Add Plug&view IP camera

3.1 With the Smartphone/tablet

In the Plug&View App menu, select "Add Camera", in order to register your camera. This is easily done by scanning the QR-code with your smartphone/tablet or through manual entry of the activation data.



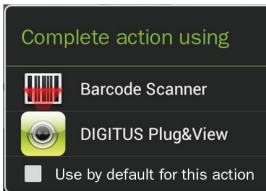
The following devices are suitable for scanning of the QR-code: Apple iPhone®, Apple iPad®, Android-Smartphone, Android-tablet (with integrated rear camera).

The MAC-address, the activation code, and the QR-code can be found on the last page of this guide.

Note: The Android version of the mobile device should be at least 2.3.5 or higher.

You will be notified that your camera needs to be connected to your router via a network cable.

Adding the camera by scanning the QR-Codes



Please select the option "Scan QR Code" on the next page. The QR code scan function of your mobile device is activated.

Should there already be one or more apps for the scanning of QR codes installed on your device, you will be presented with a pop-up selection.

Click on "DIGITUS® Plug&View", to let the DIGITUS® App scan the code.

Android devices show a grid on the display. Move the camera forward or backward until the QR-code fits into the grid.

Apple® iOS devices do not show a grid. To scan a QR-Code with an Apple® iOS device, you may need to move the device backward and forward a couple of times, until it recognizes the code.

Adding the camera though manual input of MAC-address and activation code

The MAC-address and the activation code are located on the last page of this guide. After you have selected "add camera" in the Plug& View App, please enter the number and letters combinations, which you find under "MAC". Then enter your activation code and click "Apply".

MAC:

40D855070000



Act.Code:

wcdAcAcACAcAc

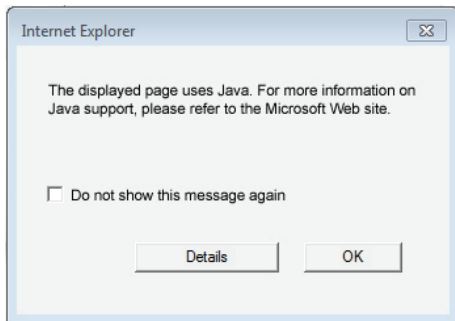
After adding the camera, please check in the camera list of the app, whether your camera is displayed with a small preview image.

3.2 Add the camera to the PC via the Browser

After the first login into your camera administration on "http://www.plug-view.com", you will be routed automatically to the registration page for the MAC-address and the activation code.

No.	MAC Address	Activate Code
1	<input type="text"/>	<input type="text"/>

If you see a message telling you that the page uses Java, please click on "Details" and follow the instructions on the next screen to install Java on your computer. This is a precondition for using the video capabilities of the web site. After the successful installation of Java, reload the web page.



Should the security settings of your PC **display a warning message after the Java installation**, agree to run Java by clicking on OK.

In the same way confirm in a possible message of the **Windows Firewall**, that Java is allowed to communicate with the Internet. For the multimedia and control functions, the OCX component needs to be installed in Internet Explorer and the VLC Media Player in Firefox and Chrome. A corresponding download link will be displayed in the user interface if necessary.

The MAC-address and the activation code are located on the last page of this guide. Enter both in the appropriate fields and click on "Apply".

After successfully adding the camera to the camera list, please check whether your camera is displayed with a small preview image.

If you plan to continue using your Plug&View camera with a network cable, the setup is completed here.

If, however, you intend to use the wireless variant in the WLAN for the greatest possible flexibility in the choice of location, please continue read reading.

4 Setting up WLAN

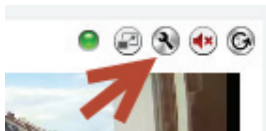
The setup of the wireless (WLAN)connection between the IP camera and the WLAN-Router/ Accesspoint is done on the PC via the browser

After the successful installation of your camera, log in to the web site "<http://www.plug-view.com>". Please click on "Login | My camera administration".

Use your Plug&View user name or select the Google-Login. If you are not signed in to your Google account, you will be automatically redirected to the Google login page.

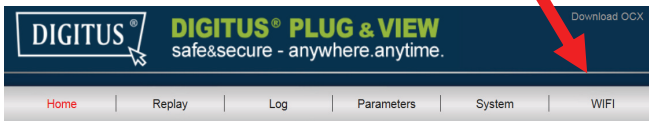
After entering your login details you can see the camera-overview page . Please check here if your camera is displayed with a small preview image.

To the right side, above the camera image, you will see some icons. Click on the "Settings" icon to be directed to the user interface of the camera.



In the following login window, log in with the user name "admin" and the password "admin". If you select the option "Autologin", you will be logged in automatically next time you access the configuration menu. Click on "Login".

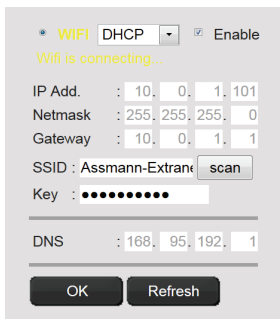
In the user interface of the camera click on WIFI, to configure the wireless settings.



A search window appears, in which the available wireless networks in your environment will be displayed. Please select the identifier (SSID) of your network and confirm with "OK".

Index	Join	SSID	BSSID	Channel	Encryption	Quality(%)
1	<input type="radio"/>	AETW-AP	6C F0 49 AA 33 04	6	WEP	100
2	<input checked="" type="radio"/>	Assmann-Extranet	90 F6 52 B3 DB D4	9	WPA/WPA2	99
3	<input type="radio"/>	st1_wifi	00 1D AA 82 E1 10	9	WPA/WPA2	63
4	<input type="radio"/>	UHT-dlink	BC F6 85 FF A4 6E	3	WPA/WPA2	52
5	<input type="radio"/>	Xfatcor	EC 43 F6 E2 E0 7B	6	WPA2	47

In the next window enter the WLAN-key (key) and confirm with "OK".



The screenshot shows a network configuration interface. At the top, there is a 'WIFI' section with a dropdown menu set to 'DHCP' and an 'Enable' checkbox that is checked. Below this, the text 'Wifi is connecting...' is displayed. The main configuration area includes several fields: 'IP Add.' with values 10, 0, 1, 101; 'Netmask' with values 255, 255, 255, 0; 'Gateway' with values 10, 0, 1, 1; 'SSID' with the value 'Assmann-Extrant' and a 'scan' button; and 'Key' with a masked input field containing ten dots. At the bottom, there is a 'DNS' field with values 168, 95, 192, 1. Two buttons, 'OK' and 'Refresh', are located at the bottom of the window.

Please ensure that your router is functioning as a DHCP-server. This is the factory setting of almost all routers.

This will establish the connection to your wireless LAN. The message "Wifi connection is made" blinks in YELLOW. If the connection was successfully established, a message to this effect will be displayed in a separate window. The display then changes to "WI-FI connection".

You can now remove the network cable from the camera and close the browser window.

Congratulations. You have just completed your Plug&view IP camera set up. Now you can access your IP camera at any time from your Smartphone, tablet PC, or from a browser.

Trademarks

DIGITUS is a registered trademark of ASSMANN Electronic GmbH.
Apple, Apple App Store are registered trademarks of Apple Inc.
Android, Google, Google Play are registered trademarks of Google Inc.

AVM Fritz!Box is a registered trademark of
AVM Computersysteme Vertriebs GmbH

Telekom Speedport is a registered trademark of
Deutsche Telekom AG.

Note:

All other trademarks not listed here, are the property of their respective owners.

Trademarks or trade names mentioned in this manual are used to describe the operating steps and do not imply that they are freely available. In any case they are the property of the respective holder of the rights.

The ASSMANN Electronic GmbH hereby declares that the IP cameras, type Plug&View, are in accordance with the requirements and provisions of the Directive 1999/5/EC. The full Declaration of Conformity can be found under <http://www.digitus.info>